

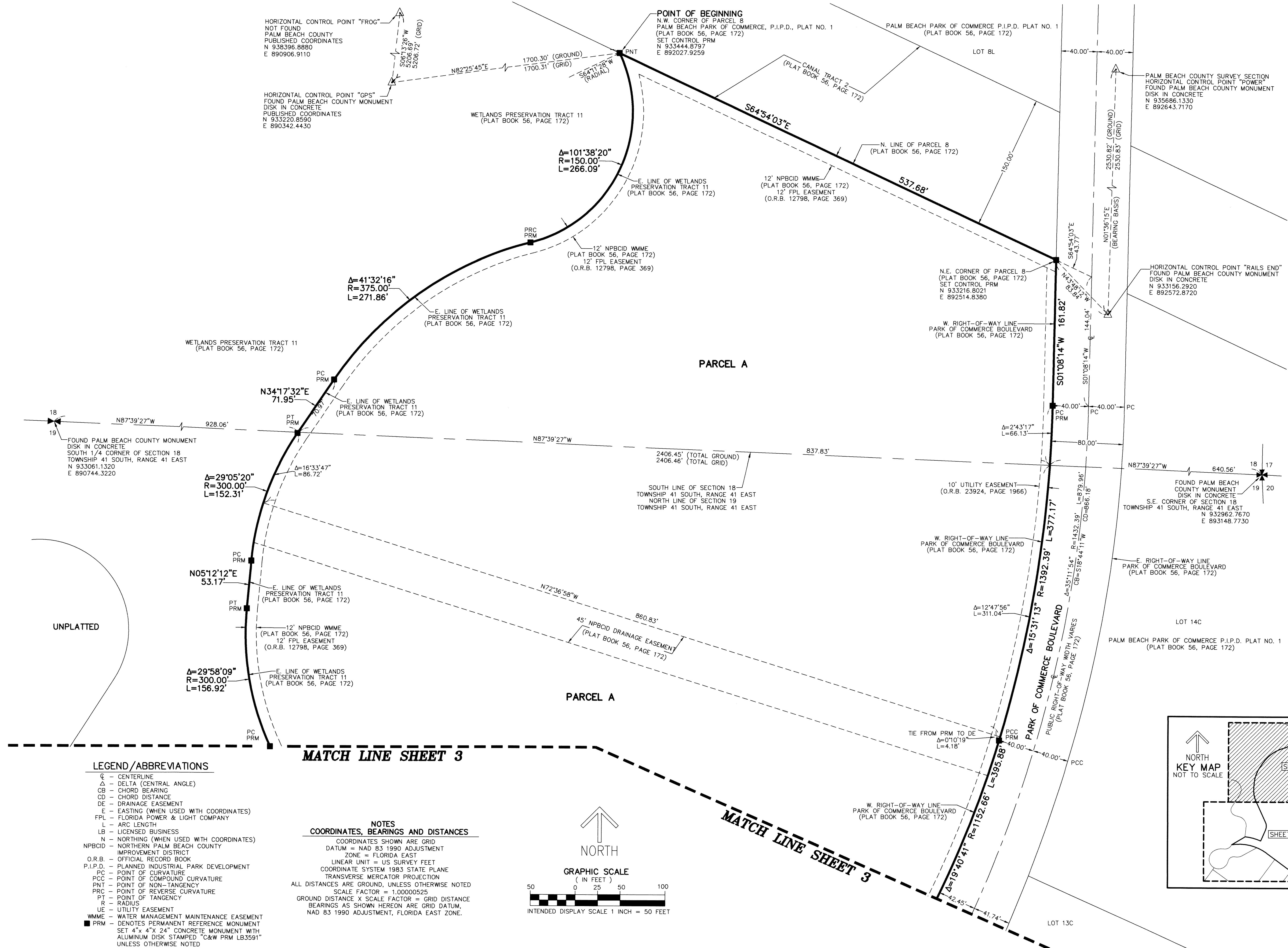
THIS INSTRUMENT PREPARED BY
 DAVID P. LINDLEY
 OF
CAULFIELD and WHEELER, INC.
 SURVEYORS - ENGINEERS - PLANNERS
 7900 GLADES ROAD, SUITE 100
 BOCA RATON, FLORIDA 33434 - (561)392-1991

PALM BEACH PARK OF COMMERCE, P.I.P.D. - PLAT 22

BEING A REPLAT OF PARCEL 8, PALM BEACH PARK OF COMMERCE, P.I.P.D., PLAT NO. 1,
 AS RECORDED IN PLAT BOOK 56, PAGES 172 THROUGH 176 OF THE PUBLIC RECORDS OF PALM BEACH COUNTY, FLORIDA,
 TOGETHER WITH A PORTION OF SECTION 19, TOWNSHIP 41 SOUTH, RANGE 41 EAST,
 LYING IN SECTIONS 18 AND 19, TOWNSHIP 41 SOUTH, RANGE 41 EAST, PALM BEACH COUNTY, FLORIDA.

197

SHEET 2 OF 3



LEGEND/ABBREVIATIONS

- CL - CENTERLINE
- Δ - DELTA (CENTRAL ANGLE)
- CB - CHORD BEARING
- CD - CHORD DISTANCE
- DE - DRAINAGE EASEMENT
- E - EASTING (WHEN USED WITH COORDINATES)
- FPL - FLORIDA POWER & LIGHT COMPANY
- L - ARC LENGTH
- LB - LICENSED BUSINESS
- N - NORTHING (WHEN USED WITH COORDINATES)
- NPBCID - NORTHERN PALM BEACH COUNTY IMPROVEMENT DISTRICT
- O.R.B. - OFFICIAL RECORD BOOK
- P.I.P.D. - PLANNED INDUSTRIAL PARK DEVELOPMENT
- PC - POINT OF CURVATURE
- PCC - POINT OF COMPOUND CURVATURE
- PNT - POINT OF NON-TANGENCY
- PRC - POINT OF REVERSE CURVATURE
- PT - POINT OF TANGENCY
- R - RADIUS
- UE - UTILITY EASEMENT
- WMME - WATER MANAGEMENT MAINTENANCE EASEMENT
- PRM - DENOTES PERMANENT REFERENCE MONUMENT SET 4"x 4"x 24" CONCRETE MONUMENT WITH ALUMINUM DISK STAMPED "C&W PRM LB3591" UNLESS OTHERWISE NOTED

NOTES
COORDINATES, BEARINGS AND DISTANCES

COORDINATES SHOWN ARE GRID
 DATUM = NAD 83 1990 ADJUSTMENT
 ZONE = FLORIDA EAST
 LINEAR UNIT = US SURVEY FEET
 COORDINATE SYSTEM 1983 STATE PLANE
 TRANSVERSE MERCATOR PROJECTION
 ALL DISTANCES ARE GROUND, UNLESS OTHERWISE NOTED
 SCALE FACTOR = 1.00000525
 GROUND DISTANCE X SCALE FACTOR = GRID DISTANCE
 BEARINGS AS SHOWN HEREON ARE GRID DATUM,
 NAD 83 1990 ADJUSTMENT, FLORIDA EAST ZONE.

